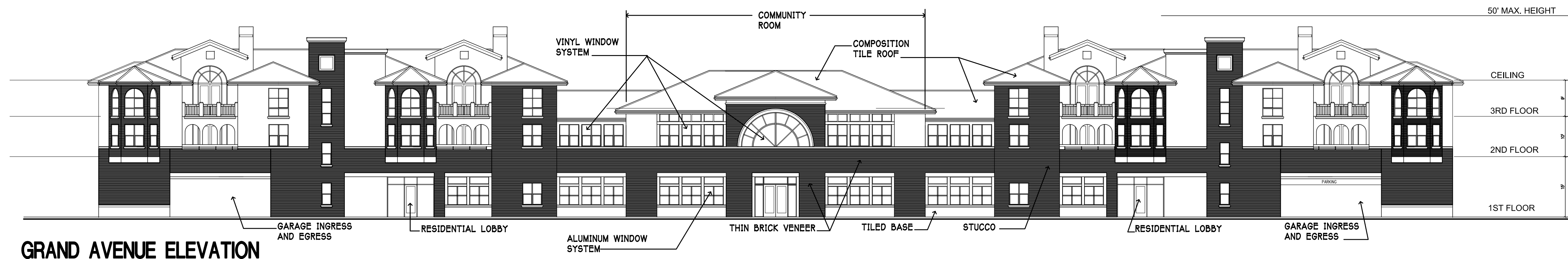


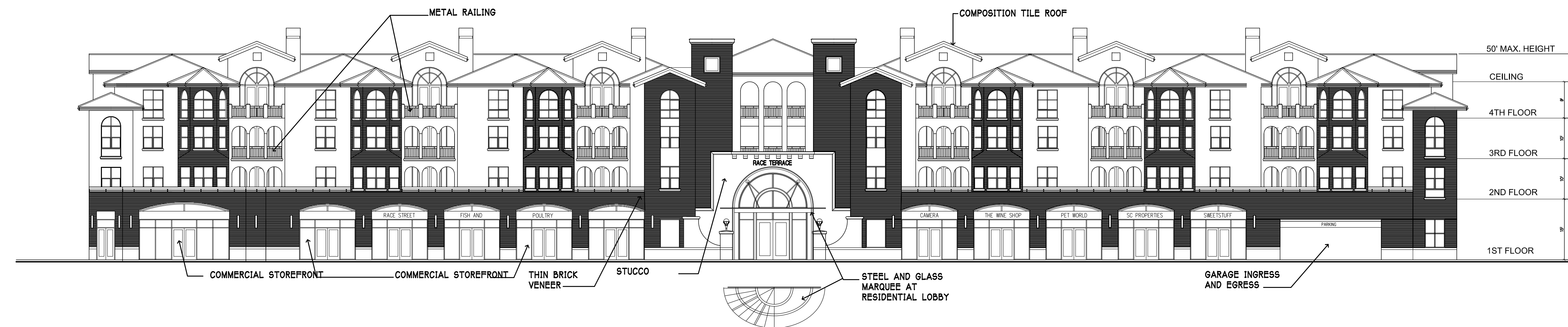
RACE STREET PARTIAL ELEVATION

SCALE : 1/8" = 1'-0"



GRAND AVENUE ELEVATION

SCALE : 1/16" = 1'-0"



RACE STREET ELEVATION

SCALE : 1/16" = 1'-0"

RACE STREET
INVESTMENT LLC

1130 OLINDER COURT
SAN JOSE, CA 95122
Telephone : 408-294-6161
Fax : 408-294-2080

PD ZONING APPLICATION
RACE STREET TERRACE

Race Street
SAN JOSE - CALIFORNIA

Date: 2-4-2011
Scale: 1/8" = 1'-0"

Drawing Title:
ELEVATIONS

Revisions:

Sheet No:

6

of Sheets

LPMD
Architects

1288 Kifer Road, Unit 206
Sunnyvale, CA 94086
Telephone : 408-992-0280
Fax : 408-992-0281